

## Bluetooth Printer Setting installation procedure

1, Make sure that your device (such as a laptop) is Bluetooth-enabled, then activate Bluetooth, Bluetooth started successfully, you can see it as below:

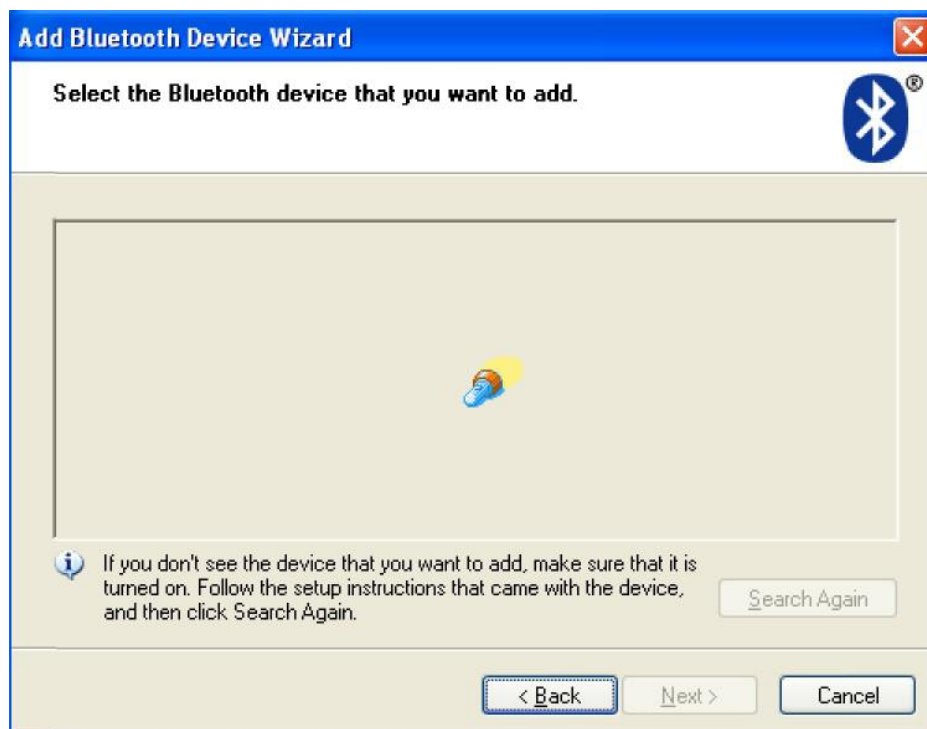


2, Power on the Bluetooth printer.

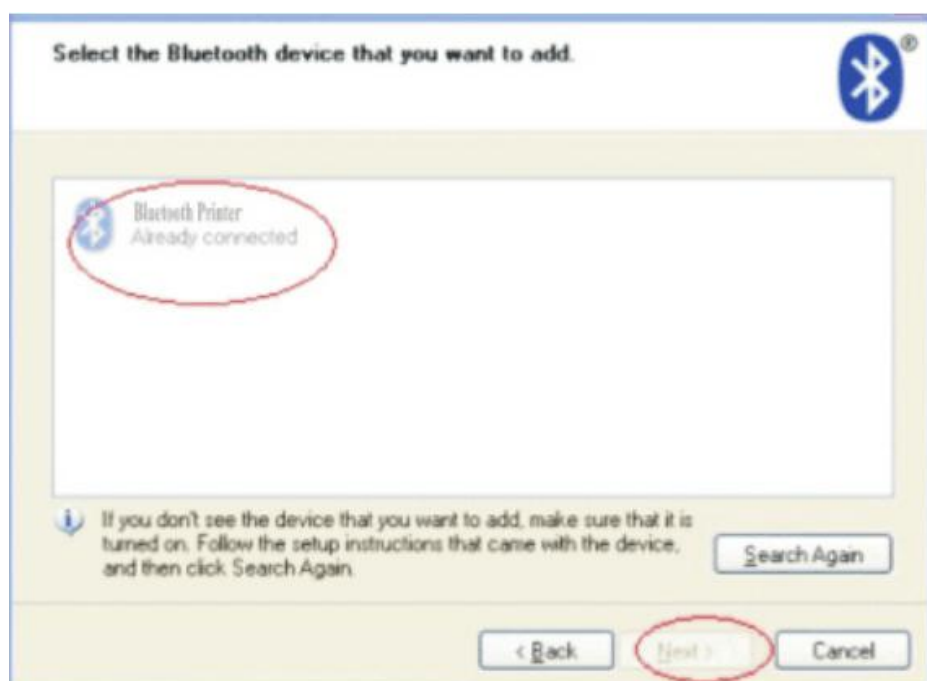
3, Click “Add a Bluetooth Device” ,then choose “My device is set up according and ready to be found” , and click “Next” (showed as below).



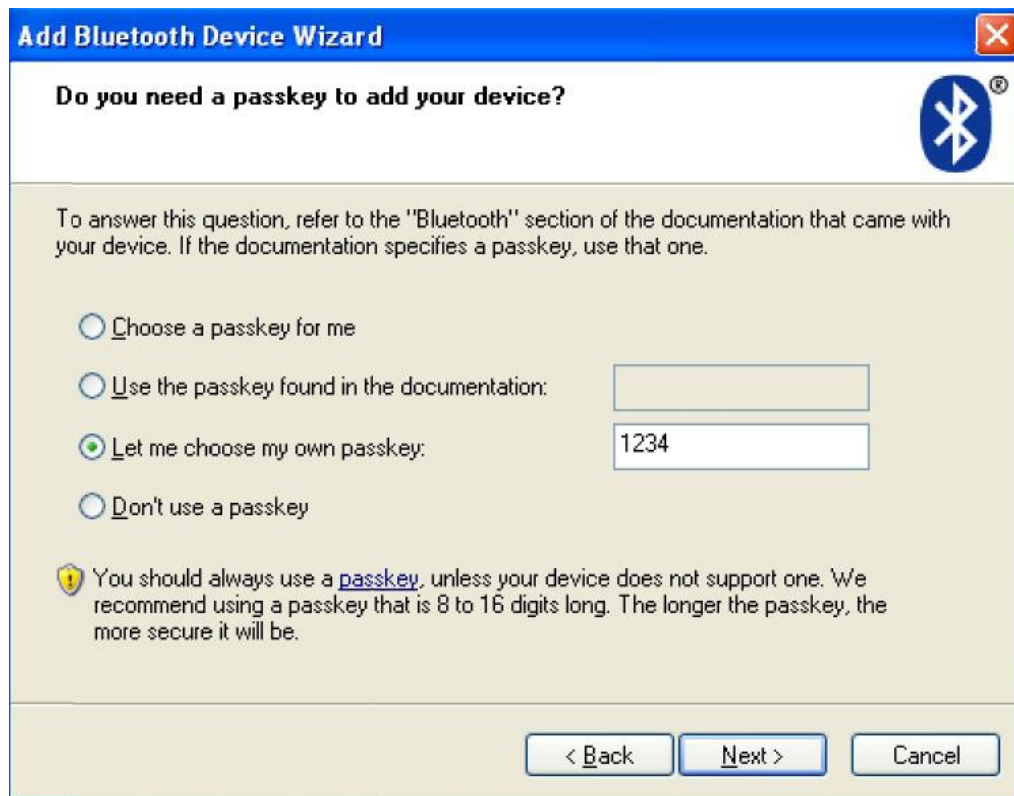
4, The device is searching the bluetooth printer, please wait.



5, If the “Bluetooth Printer” is founded, it will be listed on the screen, then click it and “Next”.



6, Choose “Let me choose my own passkey”, then enter “1234” (this is factory default password), then click “Next”.



7, Once the Bluetooth printer is already connected with your device, then Click”Finish”.

(The Bluetooth printer will be automatically assigned a COM port, please remember the assigned COM ports)



8, In the printer driver "Port" select the COM port automatically assigned by the Bluetooth printer, the port setting corresponds to the baud rate corresponding to the Bluetooth serial port (factory default Bluetooth baud rate: 9600, N, 8, 1,), in the "Device settings"→ "Print mode" selected print as "soft font" . After setting finishing, you can print the paper to have a test.